



Phedra Evo

 **Saeco**





Phedra Evo



DESIGNED
by **PASSION**

Perfect for minimalist style settings, in workplaces featuring clean and simple lines, and always with a love for coffee, that of high quality. Phedra Evo is meant for those special moments that turn coffee breaks in the office into a chance to unwind and relax. Passion for hard work and the natural desire to always obtain the best.



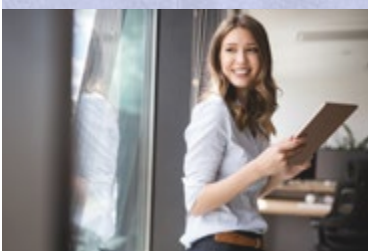
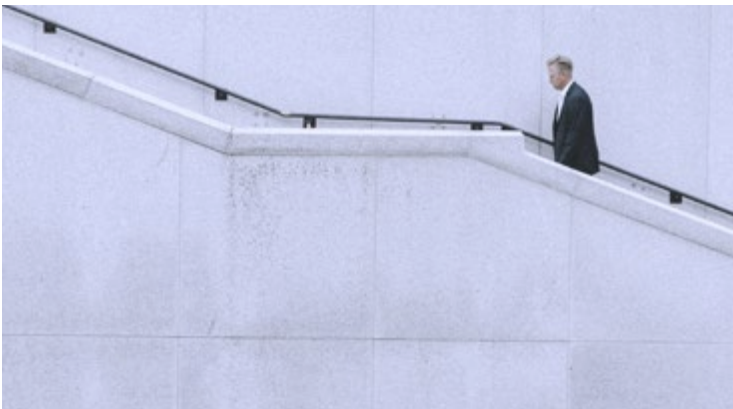


Phedra Evo

Minimal design for your space.

The new, refined, minimalist design stands out for its interface. The icons, backlit touch buttons and generously sized colour display provide an instant readout of the available options and facilitate your choice.

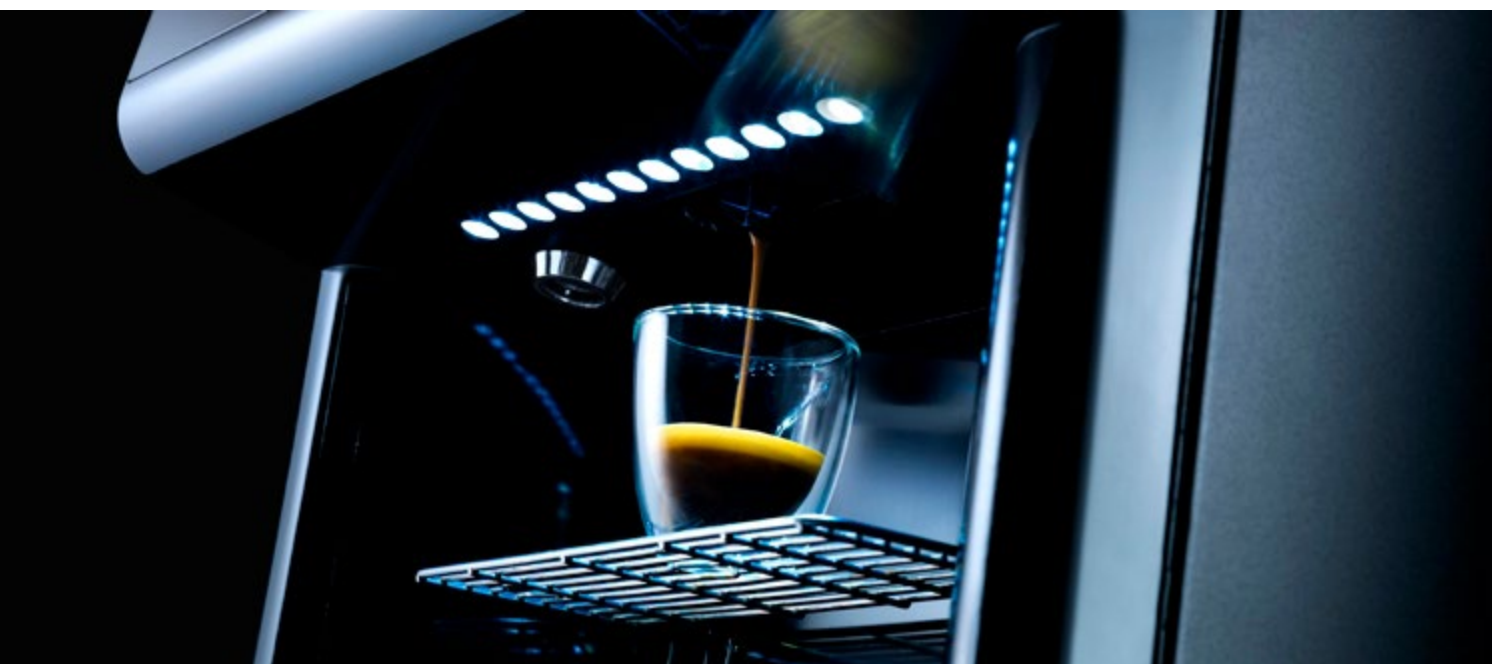
Phedra Evo is ideal for elegant environments frequented by an average number of people, such as offices, meeting rooms, lobby or hotel breakfast rooms. Although it is small in size, Phedra Evo is the ideal table-top coffee machine since it is able to provide a broad range of beverages based on coffee, milk and chocolate besides hot water for tea and herbal infusions.



Elegant technology for life at work.

Suitable to many different settings, Phedra Evo also includes a version allowing the use of fresh milk, essential for deliciously creamy froth.

Phedra Evo has a dedicated dispenser for hot water and a latest generation milk frother for preparing cappuccino, featuring a longer spout for improved performance. Style-conscious users will appreciate the LED lights in the dispensing area and the backlit buttons.



Technical specifications.



Technical data

Structural specifications

	Phedra Evo Cappuccino	Phedra Evo Espresso	Phedra Evo TTT
Dimensions (w x h x d)	393 x 695 x 508 mm	393 x 695 x 508 mm	393 x 695 x 508 mm
Weight	37.5 kg	36.5 kg	36.5 kg (Espresso TTT version) 37.5 kg (Cappuccino TTT version)
Colour	black	black	black

Electrical specifications

Power supply	220-240 V/50-60 Hz	220-240 V/50-60 Hz	220-240-120 V/50-60 Hz
Power consumption	1500 W	1500 W	1500 W

Water specifications

Coffee boiler capacity	300 cc	300 cc	300 cc
Steam boiler	yes	no	no
Boiler material	brass	brass	brass
Hot water solenoid valve	yes	yes	yes

Water supply connection

Water supply	by water main or internal tank or independent tank	by water main or internal tank or independent tank	by water main or independent tank
Connection to water main	3/4" (1 - 8 bars)	3/4" (1 - 8 bars)	3/4" (1 - 8 bars)

Other specifications

Brewing unit	7 or 9 g	7 or 9 g	10 g
Mixer	2	2	2
Automatic milk frother	yes	no	no
Vending grinder	yes	yes	yes
Electronic pre-infusion	yes	yes	yes
Use of pre-ground coffee	no	no	yes
Height-adjustable cup rest grid	yes - 89-109-185 mm	yes - 89-109-185 mm	yes - 89-109-185 mm
Automatic milk frother washing function	yes	no	yes (Cappuccino TTT version)

Capacities

Coffee bean container	1	1	1
Instant coffee container	2 - 3	2 - 3	3
Drip tray	1.8 l	1.8 l	1.8 l
Coffee grounds container	50	50	50

Canister capacities

Coffee beans	1 kg	1 kg	1 kg
Instant coffee	0.33 kg	0.33 kg	no
Fresh brew pre-ground coffee	no	no	0.41 kg
Powdered milk	0.65 kg	0.65 kg	0.65 kg
Powdered chocolate	1.75 kg	1.75 kg	1.75 kg
Instant tea	1.5 kg	1.5 kg	1.5 kg

Interface

3.5" TFT colour display	yes	yes	yes
Number of beverage selections	8	8	8
Number of pre-selections	2	2	2

Energy efficiency class

A+	yes	yes	yes
----	-----	-----	-----



Phedra Evo



Main features

- Professional components (brewing unit, coffee grinder, boiler)
- Customizable labels
- Customizable Lexan front panel
- Circuit board allowing recipes to be customized, use of the main payment systems (MDB, BDV, Executive) and statistical data recording via EVA-DTS protocol
- Use of fresh milk (in the specific version)

User interface

- 3.5" TFT colour display
- Keypad with 8 direct selections
- 2 pre-selections

Accessories

- Eva-Dts kit
- Visible coffee canister kit
- Cabinet
- FR7L-N refrigerator
- Milk Cooler



Phedra Evo



Evoca S.p.A. reserves the right to change the product specifications in accordance with a continually evolving design policy.



follow us

saecoprofessional.com

